

PALLETMANAGER Licensed Installation

We are very pleased to enclose your copy of **PALLETMANAGER**. The CD will normally autostart - otherwise execute the program **Launch.exe** found on the CD. The CD provides for both new installations or for the upgrade of any previous installation (trial or licensed). On the CD case you will find a set of licence codes. The correct entry of these codes **when first using the application is essential** to provide correct licensed operation of the software.

1. Select the Install Software option from the CD Menu and select **PALLETMANAGER**.
2. The installation will form either a complete new installation or upgrade any existing installation (licensed or trial) as required, either locally or on a network. When upgrading then you should normally install in the same folder as the previous release. When doing this **user created files** from the previous version **will be retained**. If you wish to install in a different location to that previously used then please see 7. below.
3. During installation **some old application files will first be deleted** and then updated files installed. If you re-install **the same version** (e.g. a licensed copy after a trial copy) then you may be asked to Modify or Repair or Delete the software. **Always choose Repair**.
4. The default installation location is C:\PMNT (as with previous releases) but this can be changed if required during installation. (All application files are copied to this folder)
5. After installation **PALLETMANAGER** will be found under Start / Programs. This launches program RUNPM.EXE. (See also point 9. overleaf)
6. When the application is first run you will need to enter your licence codes (from the CD case) into the 'licence registration' screen. These must be entered **exactly as given**. When correctly done a '**Fully Licensed**' message will be shown. If an error is made then the message '**Software is in Trial Mode**' will appear and the full installation sequence must be repeated.



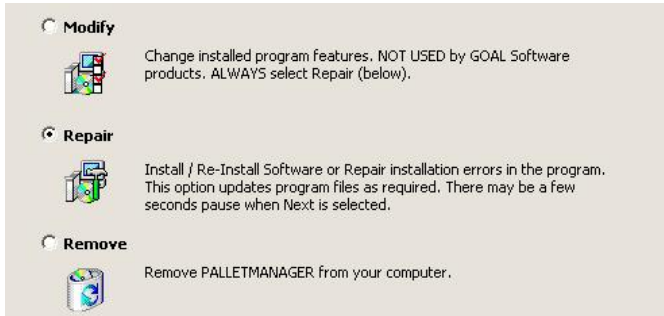
7. If **PALLETMANAGER** is installed in a new folder (instead of the folder containing any previous release) then (if required) user database files from a previous release can be copied into the new installation folder. The names of these files are: DEFAULT; PACKTYPE; STORFILE.DAT; STORFILE.IDX; STORFILE.DEL; CASEBASE.DAT; COMPRESS.DAT; CUBEBASE.PAL; PMCONFIG; CONTBASE.PAL. Also required is the folder JPGFILES (and files) found below the installation folder [Not all of these file will exist on every installation - also see the manual - near the end of Section 2 - for more information]

Please turn over for further installation information.

Additional Information.

This release uses the widely used InstallShield / Microsoft MSI 32 bit install system. During any installation the previous release of our software is firstly removed - **with the exception of all end-user files / databases** - and then replacement application files are installed.

(8) As mentioned earlier, if for some reason you re-install the same release of the application (e.g. installing a licensed system after a trial system etc.), then you may be prompted to:



Repair is always the correct selection as it updates all executable files. As stated there may be a **short delay when Next** is selected before the next screen appears.

(9) On **Windows Vista** systems towards the end of installation you may receive a message from the **Windows Program Compatibility Assistant** questioning whether the software has installed correctly. In almost all instances this message can be ignored, assuming the install procedure has appeared to work normally. We have **NOT** experienced this issue with **Windows 7**.

(10) **Very occasionally** you may find that an entry for any previously installed version of **PALLETMANAGER** remains on the start menu. This can be removed by using the **right** mouse button to highlight the unwanted entry and then selecting **Delete**. (Do **not** remove it using add/remove in Control Panel - this would remove some user data files and current application files)

(11) If **removing** the application using Control Panel / Add&Remove Programs the user files referenced in point 7 overleaf are **not normally** deleted. To be sure backup these if required.

We wish you well in the use of **PALLETMANAGER** and welcome user comments on both the software and documentation, and on new features you would like to see included.

support@gowergal.co.uk